

EVAsubaqua

Factsheet - A-series



	A25 rgbw	A25 mono
Applications	Residential pools, instruction pools	Residential pools, instruction pools
Type of cover	Satin cover	Satin cover
Beam angle	Wide flood - 120°	Wide flood - 120°
Measurements luminaire	Front side Ø 117 mm Depth 41 mm	Front side Ø 117 mm Depth 41 mm
Max. installation depth	25 meter	25 meter
Max. water temperature	40°C	40°C
Cable length luminaire (ex factory)	10/20/30 meter (7 wires: 5x0.5mm ² , 2x0.25mm ²) Cable is fixed to the luminaire to ensure watertightness.	10/20/30 meter (7 wires: 5x0.5mm ² , 2x0.25mm ²) Cable is fixed to the luminaire to ensure watertightness.
Max. cable length	The 10M cable can be extended to a maximum of 100 meter (7x2.5mm ²)	The 10M cable can be extended to a maximum of 100 meter (7x2.5mm ²)
Type of leds	6x high power multichip leds	6x high power mono leds
Colour temperatures	6500K - Rgbw clear white 3000K - Rgbww warm white	6500K - Clear white 3000K - Warm white Mediterranean
Lumen efficacy led	3000K - Warm white: 115 Lm/W 6500K - Clear white: 135 Lm/W	3000K - Warm white: 115 Lm/W 6500K - Clear white: 135 Lm/W
Cooling	Water cooling on the backside of the luminaire is necessary	Water cooling on the backside of the luminaire is necessary
Warranty	4 years	4 years

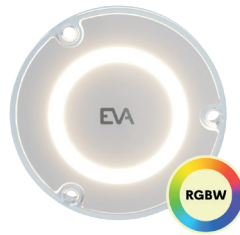


Power Supply Unit

	A25 rgbw	A25 mono
Dimensions Power Box	Length 230 mm, width 140 mm, depth 95 mm	Length 230 mm, width 80 mm, depth 65 mm
Protection rating power box	IP65 housing Dry and condensation-free area (zone 2)	IP65 housing Dry and condensation-free area (zone 2)
Working temperature power box	-20°C to + 40°C	-20°C to + 40°C
Protections power supply	Short circuit, overload, overvoltage, SELV, Class 2 output, double insulation	Short circuit, overload, overvoltage, SELV, Class 2 output, double insulation
Safety standard compliancy	IEC EN 60598-2-18	IEC EN 60598-2-18
Driver input/output	100-240 Vac / 30Vdc	120-250 Vac / 30Vdc
Wattage	25W	25W
Driving technology	EVA DMX - DMX 512	0-10 Vdc (dimming)/DALI on request

EVAsubaqua

Factsheet - A-series



	A50 rgbw	A40 mono
Applications	Competition, recreational, instruction pools	Competition, recreational, instruction pools
Type of cover	Microprism cover	Microprism cover
Beam angle	Wide flood - 120°	Wide flood - 120°
Measurements luminaire	Front side Ø 117 mm Depth 41 mm	Front side Ø 117 mm Depth 41 mm
Max. installation depth	25 meter	25 meter
Max. water temperature	40°C	40°C
Cable length luminaire (ex factory)	10/20/30 meter (7 wires: 5x0.5mm ² , 2x0.25mm ²) Cable is fixed to the luminaire to ensure watertightness.	10/20/30 meter (7 wires: 5x0.5mm ² , 2x0.25mm ²) Cable is fixed to the luminaire to ensure watertightness.
Max. cable length	The 10M cable can be extended to a maximum of 100 meter (7x2.5mm ²)	The 10M cable can be extended to a maximum of 100 meter (7x2.5mm ²)
Type of leds	12x high power mono leds	12x high power multichip leds
Colour temperatures	6500K - Rgbw clear white 3000K - Rgbww warm white	6500K - Clear white 3000K - Warm white Mediterranean
Lumen efficacy led	3000K - Warm white: 115 Lm/W 6500K - Clear white: 135 Lm/W	3000K - Warm white: 115 Lm/W 6500K - Clear white: 135 Lm/W
Cooling	Water cooling on the backside of the luminaire is necessary	Water cooling on the backside of the luminaire is necessary
Warranty	4 years	4 years



Power Supply Unit

	A50 rgbw	A40 mono
Dimensions Power Box	Length 230 mm, width 140 mm, depth 95 mm	Length 230 mm, width 80 mm, depth 65 mm
Protection rating power box	IP65 housing Dry and condensation-free area (zone 2)	IP65 housing Dry and condensation-free area (zone 2)
Working temperature power box	-20°C to + 40°C	-20°C to + 40°C
Protections power supply	Short circuit, overload, overvoltage, SELV, Class 2 output, double insulation	Short circuit, overload, overvoltage, SELV, Class 2 output, double insulation
Safety standard compliancy	IEC EN 60598-2-18	IEC EN 60598-2-18
Driver input/output	100-240 Vac / 30Vdc	120-250 Vac / 30Vdc
Wattage	50W	40W
Driving technology	EVA DMX - DMX 512	0-10 Vdc (dimming)/DALI on request

EVAsubaqua A-series

Factsheet - Niche & Cover plate



EVAsubaqua niche

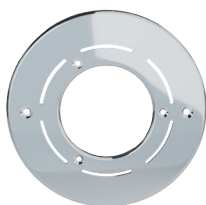
Material	ABS
Installation depth	60 - 70 cm from the water surface to the lamp (for an average pool depth of 150 cm)

PP niche

Dimensions	Ø 126 mm Depth 74 mm
------------	-------------------------

PP poly niche

Dimensions	Ø 126 mm Depth 74 mm
Dimensions gasket + ring	Ø 175 mm Depth 6 mm



EVAsubaqua cover plate

Material	ABS or stainless steel
Dimensions	ABS cover plate flanged Ø 190 Inox cover plate flat and flanged Ø 194

Finishes

Core edition	Inox gloss White Grey Anthracite
Signature edition	Inox satin Gold Bronze Black