

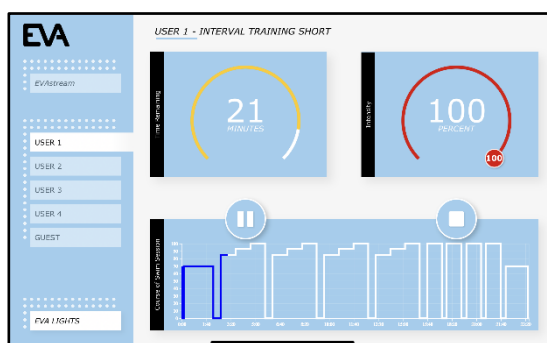
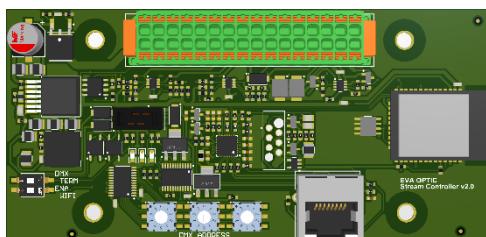


# User Manual

## EVA Experience Controller + EVA Experience Webinterface Standalone or with Piëzo3 controller



*For operating the EVAstream and/or EVA LED underwater lights with  
the EVA Experience Webinterface*



EVA Optic B.V.  
EVA Tech B.V.  
De Velde 1  
8064 PH Zwartsluis  
The Netherlands

[www.evaoptic.com](http://www.evaoptic.com)

## Contents

Contents & Safety	2
Technical requirements tablet	3
Network connection	4
<i>Pairing a tablet to the EVA Experience Controller</i>	4
<i>Configuration Option 1 – Home Network</i>	5
<i>Configuration Option 2 – New Network</i>	7
Updating the Firmware	9
Settings on first use	10
Operating the EVA Experience Webinterface	12
<i>Operating EVA Lights</i>	12
<i>Operating the EVAstream</i>	13
<i>Operating the preset User Trainings</i>	14

## Safety

ATTENTION! EVAstream is a powerful machine. The machine contains, among other things, a powerful motor with a rotating screw. As with any machine, always consider your safety and the safety of other users when using it. **Carefully follow the included instructions for safe operation of the EVAstream.** Failure to comply or inadequate compliance with these important instructions can result in serious injury or property damage. We do not accept any claim under warranty and/or liability for material and/or immaterial damage as a result of failure to comply with these instructions regarding installation, assembly, and use.



Be aware of the fact that the EVAstream can be controlled remotely by the EVA Experience webinterface, this can be protected with the child lock (page 11).

## Technical requirements tablet

The EVA controller can **only be operated with a touchscreen tablet**. We advise a screen size of 9.7" to 11" for optimal functioning of the webinterface.

The following tablet operating systems are suitable:

- Android tablets with Android version 12 or higher
- Apple tablets with iOS 15.3 or higher

Do you already have a tablet that you want to use? We always recommend that you first test whether your tablet is suitable for the EVA Experience Webinterface by following all the necessary steps in this manual.

Do you not yet have a suitable tablet? The following tablets are supported in any case:

- Regular iPad
- iPad Air
- iPad Pro 9.7" - 11" (the Pro also has a larger version, which is less suitable)

## Network Connection

### Pairing a tablet to the EVA Experience Controller

The EVA Experience Controller is operated with a tablet (see previous page). An internet connection is not required for this. However, the tablet must be connected to the same WiFi network as the controller. There are 2 options for this:

#### **1. Home network**

Connect the tablet and the EVA Experience Controller to the home network. This option is preferred if the home network provides sufficient coverage around the pool:

- The tablet remains connected to the home network while operating the EVA Experience Controller.
- Switching networks on the tablet is not necessary to operate the controller.

#### **2. New network**

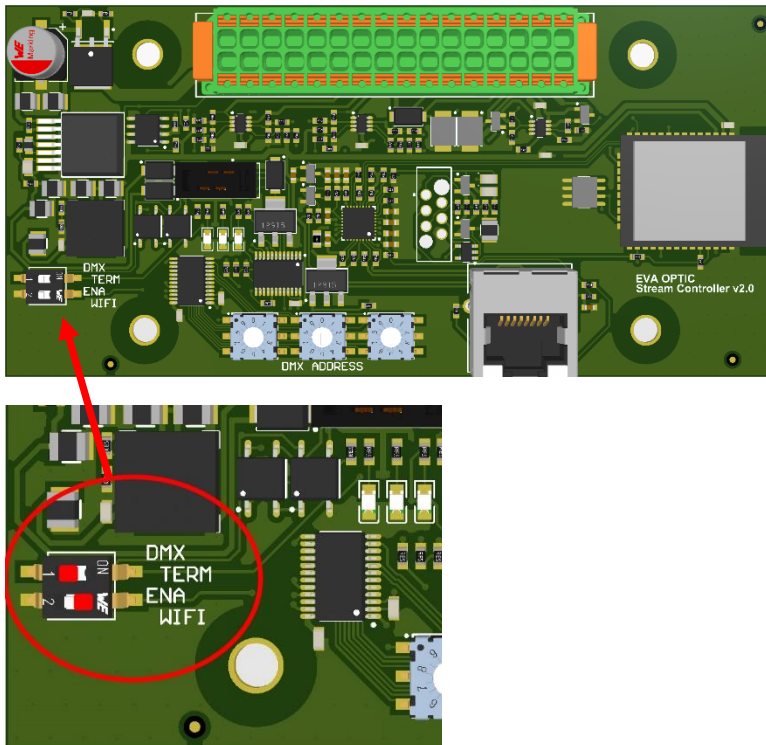
Create a new WiFi network with the EVA Experience Controller, and connect the tablet to this network. This option is suitable if the home network does not provide sufficient coverage around the pool:

- Due to the EVA Experience Controller's own network, it is not necessary to further expand the coverage of the home network.
- Your device is not connected to the internet.

Standard 2.4 GHz WiFi networks are supported.

## Configuration Option 1 – Home network

1. On the EVA Experience Controller (green printed circuit board), set the “ENA WIFI” button to “ON” by sliding switch 2 to the right:



2. On the tablet, open the WiFi connections screen, and connect to the network “EVAcontroller AP #####”. A screen with the EVA logo will automatically appear. Click on “Continue” under the logo. The following setup screen opens automatically:

The screenshot shows the EVA configuration web interface on a tablet. The top status bar displays the time 10:54, date Di 31 mei, and battery level 30%. The interface includes a 'Log in' button and a 'captive.apple.com' header. The left sidebar contains navigation options: CONFIGURATION, CONNECTIONS, SETTINGS, ADVANCED SETTINGS, and FIRMWARE. The main content area is titled 'CONNECTIONS' and displays network configuration details for 'EVAcontroller AP #####'. The details include Network Mode (Station Mode), Network SSID (EVA Optic Kantoor), IP Address (192.168.159.200), Netmask (255.255.255.0), Default Gateway (192.168.159.254), DNS Server (DHCP), NTP Server (nl.pool.ntp.org), Current Time (2022-05-31 10:54:09), and Hostname (evacontroller). Below this, the 'Configure Network' section provides input fields for Network Mode, Network SSID, Password, Address Assignment, DNS Server, NTP Server, and Hostname.

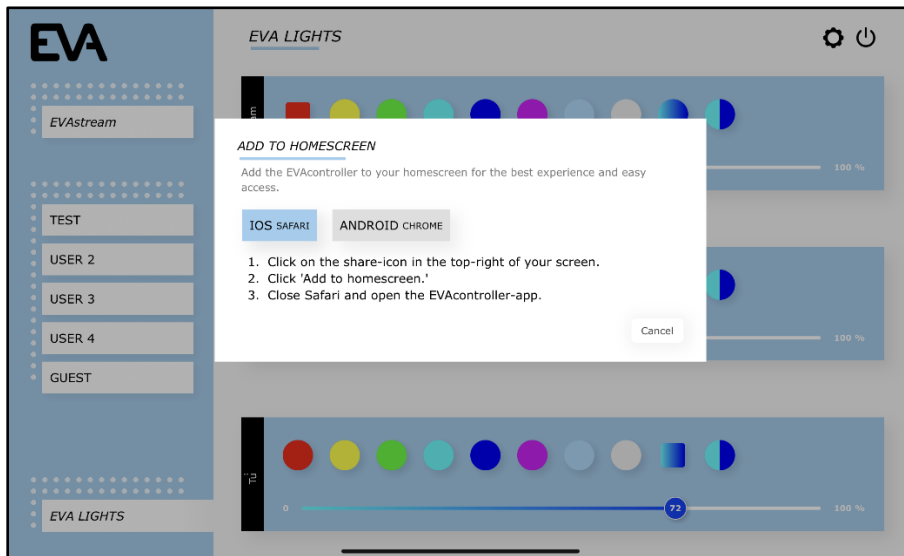
Network Configuration	Configure Network
Network Mode:	Station Mode
Network SSID:	EVA Optic Kantoor
Password:	.....
Address Assignment:	DHCP
DNS Server:	8.8.8.8
NTP Server:	nl.pool.ntp.org
Hostname:	evacontroller

3. Click the field next to “Network Mode” and choose “Station Mode”.  
Click the field next to “Network SSID”, and choose the home network from the list.

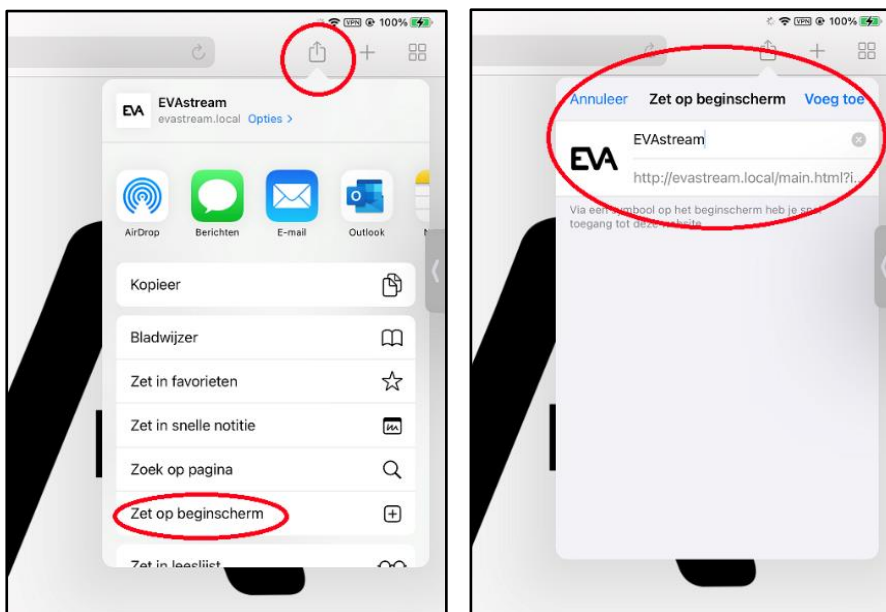
A “Password” field appears when it is a secured network. Enter the password for the home network here. The hostname is by default “evacontroller”, do not change it. The other settings usually do not need to be changed either.

Click on the save icon at the top right.

4. On the EVA Experience Controller (green printed circuit board), set the “ENA WIFI” button to “OFF” again (slide switch 2 back to the left). The EVA Experience Controller is now connected to the home network.
5. On the tablet, open the WiFi connections screen and connect to the home network.
6. Go to your internet browser and enter the following address in the address bar:  
<http://evacontroller.local>
7. You will see the following screen:



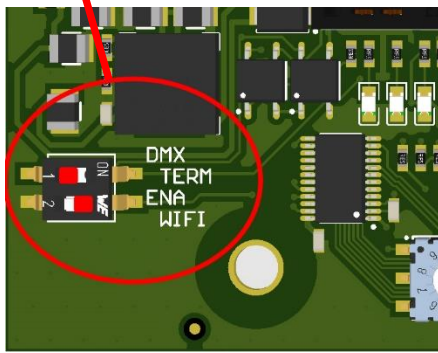
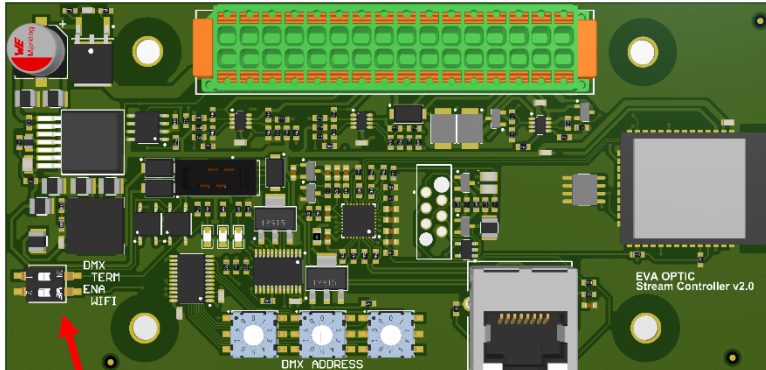
The pop-up provides instructions on how to create an EVA shortcut icon on your tablet's desktop for easy access to the EVA Experience Webinterface in the future. To do this, click on the share icon to the right of the address bar:



Select “Add to Home Screen”. Name the icon and select “Add”. The icon is now added to your tablet's desktop.

## Configuratie Optie 2 – Nieuw Netwerk

1. On the EVA Experience Controller (green printed circuit board), set the “ENA WIFI” button to “ON” by sliding switch 2 to the right:



2. On the tablet, open the WiFi connections screen, and connect to the network “EVAcontroller AP #####”. A screen with the EVA logo will automatically appear. Click on “Continue” under the logo. The following setup screen opens automatically:

10:57 Di 31 mei captive.apple.com  
EvaStream AP 5FF974

Log in Annuleer

**EVA**  
CONFIGURATION

- CONNECTIONS
- SETTINGS
- ADVANCED SETTINGS
- FIRMWARE

**CONNECTIONS**

Network Configuration

Network Mode:	Station Mode
Network SSID:	EVA Optic Kantoor
IP Address:	192.168.159.200
Netmask:	255.255.255.0
Default Gateway:	192.168.159.254
DNS Server:	DHCP
NTP Server:	nl.pool.ntp.org
Current Time:	2022-05-31 10:57:48
Hostname:	evacontroller

Configure Network

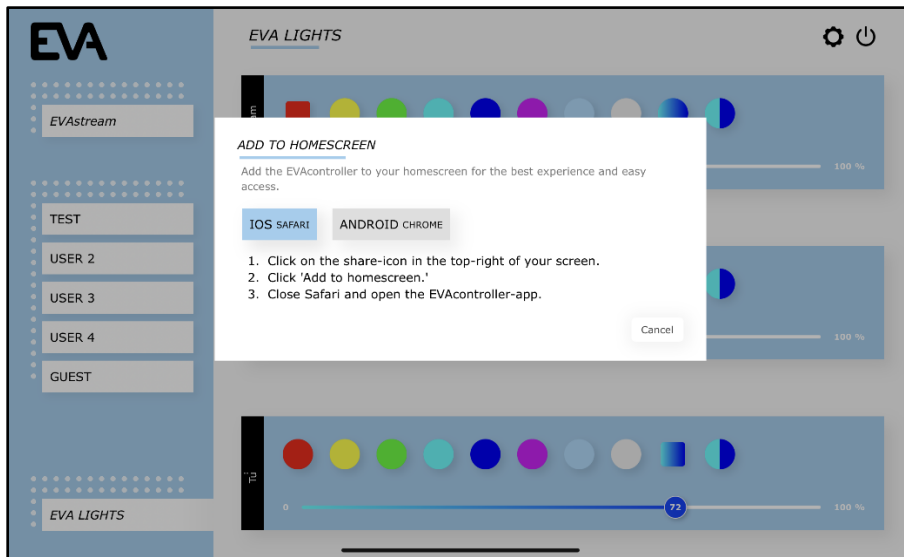
Network Mode:	<input type="text" value="AP Mode"/>
SSID:	<input type="text" value="EVANetwork"/>
Password:	<input type="password" value="....."/>
Hostname:	<input type="text" value="evacontroller"/>

3. Click on the field next to “Network Mode” and choose “AP Mode”.  
In the field next to “Network SSID”, enter a name of your choice for the new network. Only use letters and numbers. A network with the same name must not yet exist.

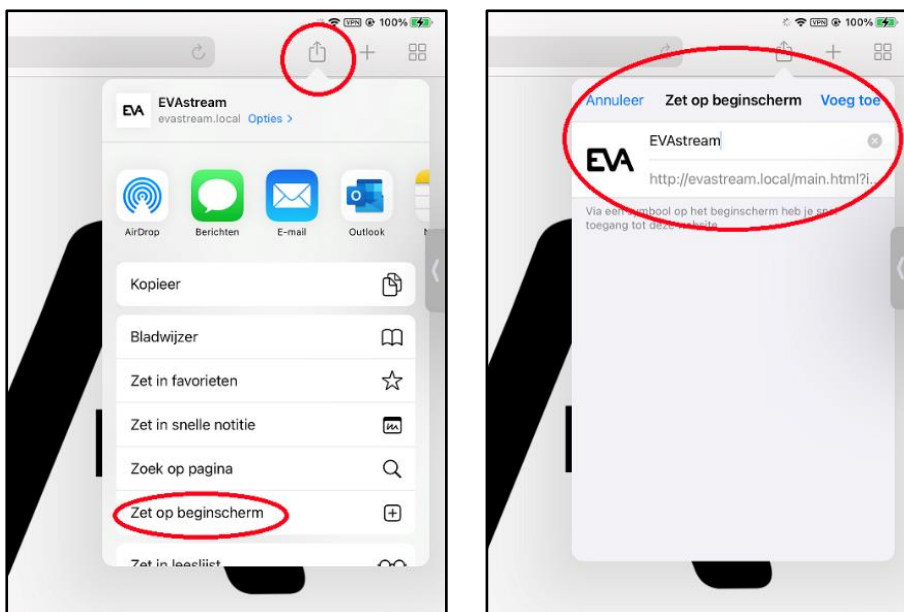
Enter a password of your choice in the field next to “Password”. The hostname is by default “evacontroller”, do not change it.

Click on the save icon at the top right

4. On the EVA Experience Controller (green printed circuit board), set the “ENA WIFI” button to “OFF” again (slide switch 2 back to the left). The EVA Experience Controller is now connected to the home network.
5. On the tablet, open the WiFi connections screen and connect to the home network.
6. Go to your internet browser and enter the following address in the address bar:  
<http://evacontroller.local>
8. You will see the following screen:



The pop-up provides instructions on how to create an EVA shortcut icon on your tablet's desktop for easy access to the EVA Experience Webinterface in the future. To do this, click on the share icon to the right of the address bar:



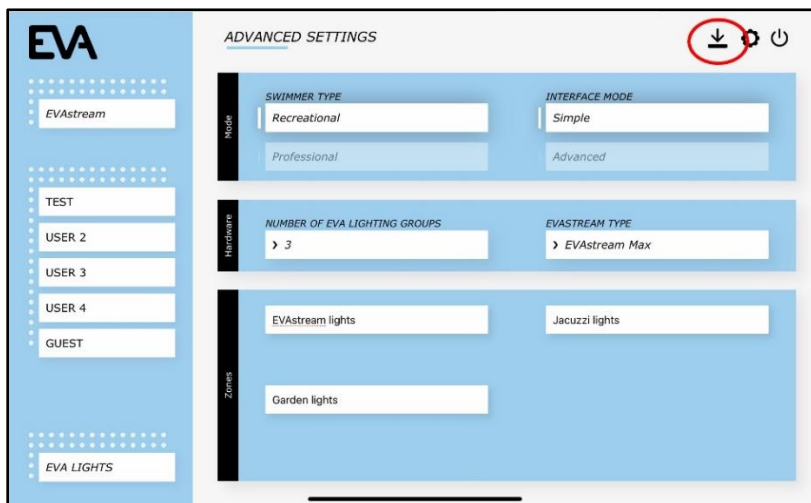
Select “Add to Home Screen”. Name the icon and select “Add”. The icon is now added to your tablet's desktop.

## Updating the Firmware

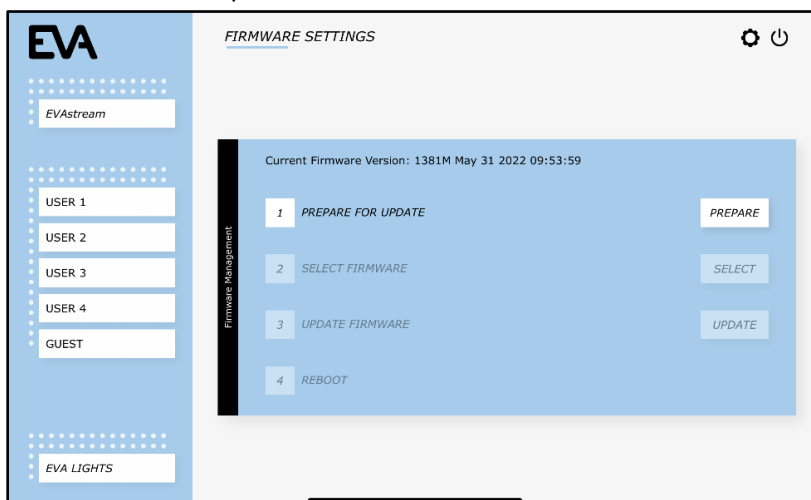
It is possible that the EVA Experience Controller needs a firmware update, for new or additional functionalities, or to fix any errors in a current firmware version.

You can easily perform a firmware update yourself:

1. Go to the downloads page on our website (<https://evaoptic.nl/en/product-downloads-3/>) and download the new firmware file on your tablet.
2. Click on the EVA app icon you created in the previous step, or go to your internet browser and enter the following address in the address bar: <http://evacontroller.local>
3. You will now see the homepage of the EVA Experience Webinterface.
4. Click **twice** on the gear icon in the top right corner for the advanced settings.
5. Click on the download icon at the top right of the screen:



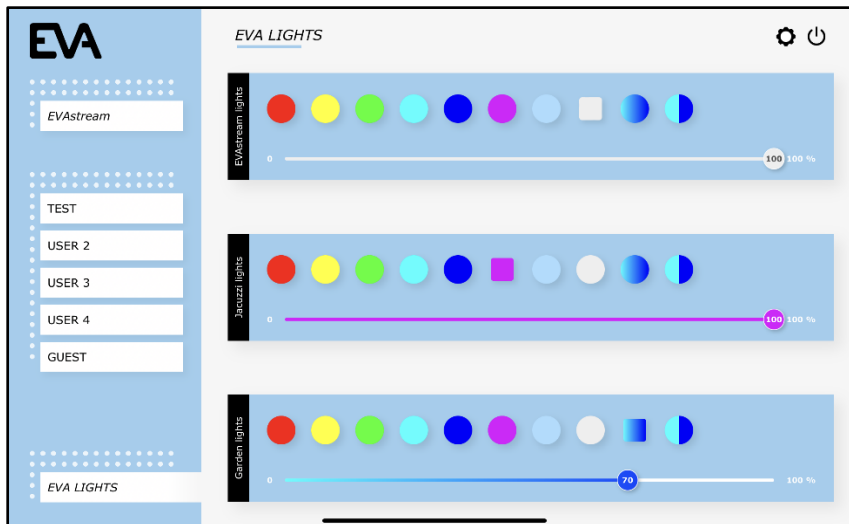
6. Now follow the steps on this screen:



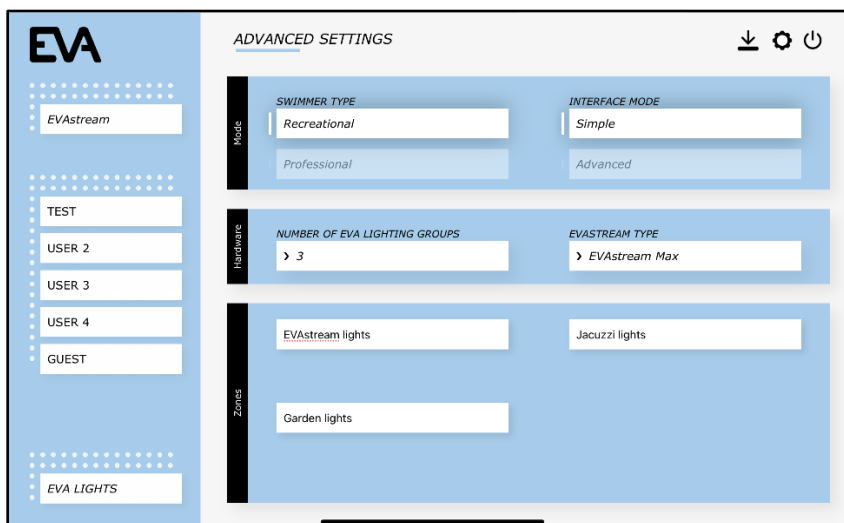
- 1: Click on the button “Prepare” > “Ok” > “Ok”
- 2: Click “Select” and select the firmware file you saved on your device at step 1.
- 3: Click on “Update”. The new firmware is now installed.
- 4: Click on “Reboot” to restart the EVA Experience Webinterface.

## Settings on first use

1. Click on the EVA app icon you created in the previous step, or go to your internet browser and enter the following address in the address bar: <http://evacontroller.local>  
You will now see the homepage of the EVA Experience Webinterface:

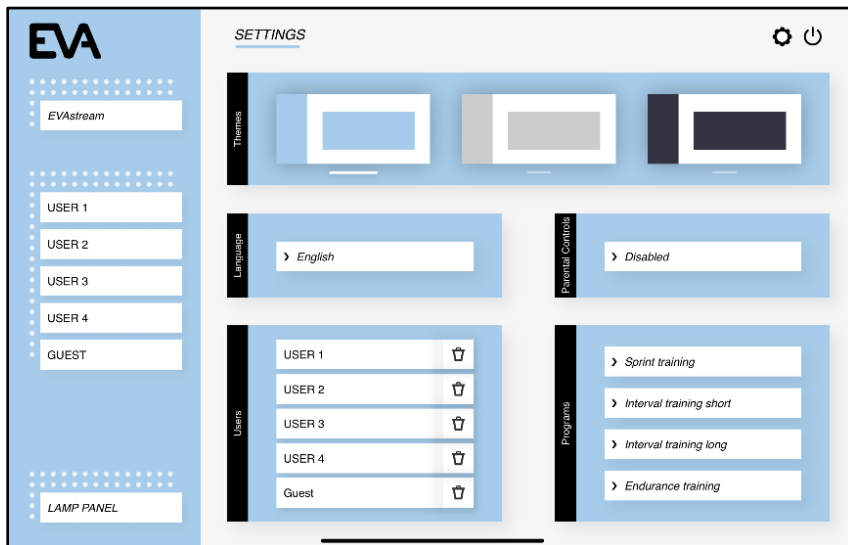


2. Click **twice** on the gear icon at the top right of the screen to go to the advanced settings for connected EVA products:



- At “Swimmer Type” select “Recreational”, and at “Interface Mode” select “Simple”
- If applicable, select the number of EVA lighting groups and at Zones (the block below) give them recognizable names such as EVAstream Lights or Jacuzzi Lights .  
**NB! The first group is always the lighting group that is linked to the EVAstream. The lighting in this group automatically changes colour during training sessions.**
- Select the correct EVAstream type, if applicable.

3. Click **once** on the gear icon at the top right of the screen to go to the basic settings:



On this page you can select the colour scheme of the webinterface, set your language, setup parental control, create users and link EVAstream training workouts to the users:

- **Setting up Parental Control**

Select “Enabled” to enable the child lock. In order to use the EVAstream, a code of your choice must now be entered. You can set your own code as follows: Select “Enabled” and enter the default **master code: 6738**. Then enter the code of your choice.

11

From now on you can use both codes (master code and your own code). So if you forget your own code, you can always use the master code to create a new code of your own.

When the child lock is enabled, you will be asked to enter the code at various times, including before switching on the EVAstream.

- **Setting up Users and Swim Trainings**

Click on “add new user” and enter the name of the user followed by “Enter” on your keyboard. Add workouts to the user by selecting them on the right under “Swim Trainings”. You can choose from 4 standard pre-programmed swimming workouts:

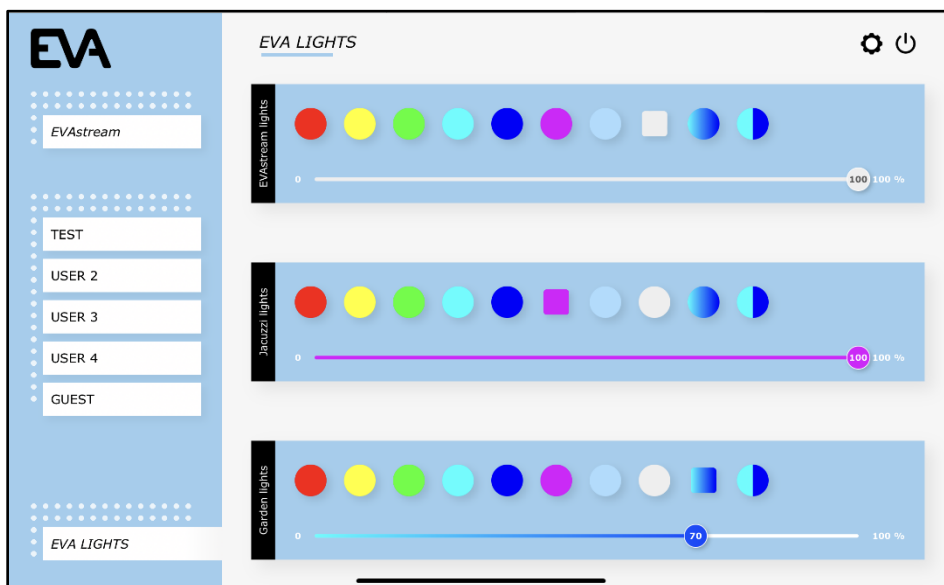
- Sprint Training of 18 minutes
- Short Interval Training of 24 minutes
- Long Interval Training of 37 minutes
- Endurance Training of 48 minutes

## Operating the EVA Experience Webinterface

### Operating EVA Lighting

Click on “EVA Lights” in the webinterface. You now get an overview with 1 or more control panels, depending on the number of lighting groups that your installation has.

For example, if you have EVA underwater lights in a swimming pool and jacuzzi, and EVA spotlights in your garden (and these groups of lighting can be controlled separately), your screen will look like this:

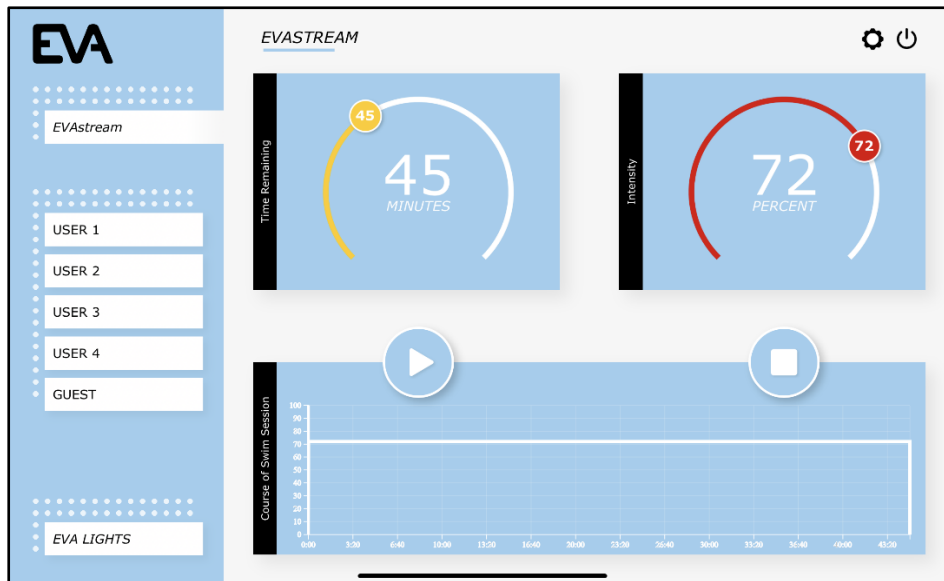


Select the desired colour or colour changing scene per lighting group by clicking on it. You can adjust (dim) the light intensity per lighting group by means of the slider(s).

When the EVAstream is being used for a preset swim training, the top lighting group will not be available, because this group contains the EVA underwater lights that change colour during the swimming training. This group will turn grey in the webinterface during the training. The other lighting groups can still be operated while training.

## Operating the EVAstream

In the webinterface, click on “EVAstream”. You will now see the following control panel:



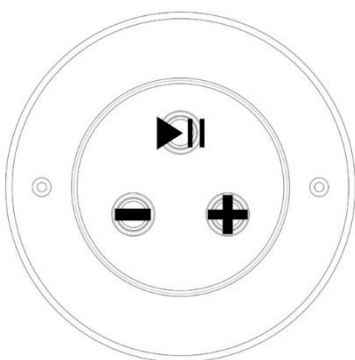
Here you can control the EVAstream. Determine the swimming speed (Intensity) and how long you want to swim continuously (Time remaining).

<u>Time Remaining</u>	<u>Intensity</u>	<u>Course of Swim Session</u>
Select how many minutes you want to swim. A minimum of 5 to a maximum of 120 minutes. The time counts down in real-time so you can easily see how much time remains of your swimming session.	Select at what percentage of the maximum EVAstream capacity you want to swim. The system always remembers the last used intensity.	The course of your current swimming session is displayed here in real time. When you click on the “play” icon, the bar will start to run. You see how much time you swim and at what intensity.

You can always pause and restart your swimming session. You can also change your swimming speed during the session with the Intensity slider or with the Piezo3 control (if applicable).

## Combining EVA Experience Webinterface and Piezo3 controller

The EVA Experience Webinterface can be used in combination with a EVA Piezo3 controller unit in the pool.



You can prepare your swim session in the webinterface and then control it from inside the pool. Set the desired duration and intensity of your swimming session on the tablet. You can then start the session from the pool.

From the pool, press the top Piezo button to start the training session (and pause if desired). The bottom two Piezo buttons are used to decrease (left) or increase (right) the swim speed. If you press these two buttons at the same time, the child lock will be switched on – if activated – release is only possible via the webinterface.

## Operating the preset User Trainings

### Structure of the user training sessions

You can follow preset swim training sessions. You will find these under the users you have created. Each training follows a fixed structure: warm-up swim, one to three exercise cores, cool-down swim. An exercise core is a series of repetitions of one particular exercise. After each exercise you have a short rest of 15 seconds to a maximum of 1 minute. Some exercises are swum at the same speed, in other exercises the speed is increased within the exercise or every repetition of the exercise goes a little faster.

### Colour changing underwater lights

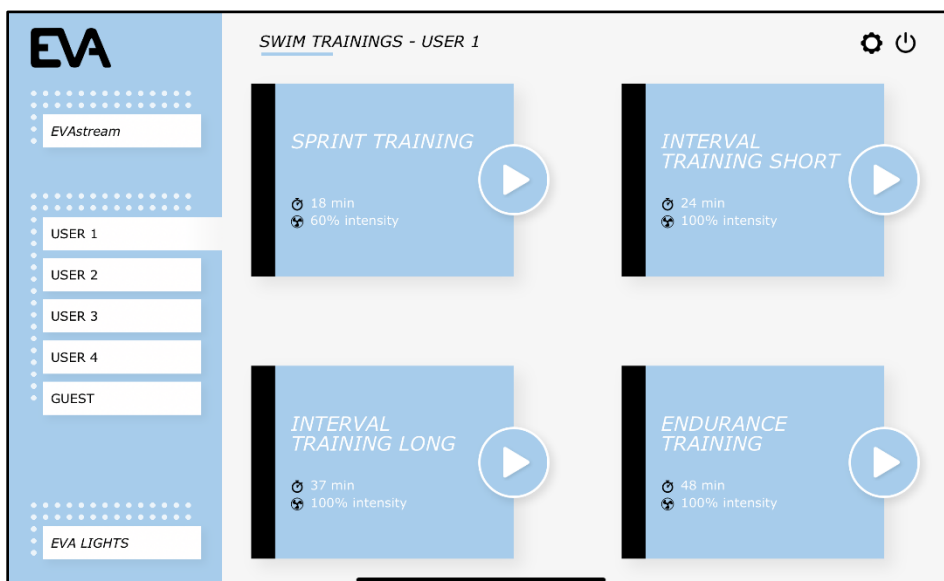
The EVA LED underwater lighting change colour during the exercises. The underwater lighting guides you through the training. Every exercise, whether it's a sprint or an endurance exercise, is made up of three parts; you start the exercise in red light, after one third the lights turn green, and you end the exercise in blue light. The changing light colours give you orientation within the exercise and also motivate you.

Have the lamps turned blue? You know you're almost there, you just add a little extra! Rest breaks are also built into every exercise. The lamps turn white, the EVAstream is off, you can catch your breath. A few seconds before the next exercise starts, the lights flash briefly. The number of flashes of the lamps indicates how many repetitions of this exercise will follow still.

14

### Operating a swim training

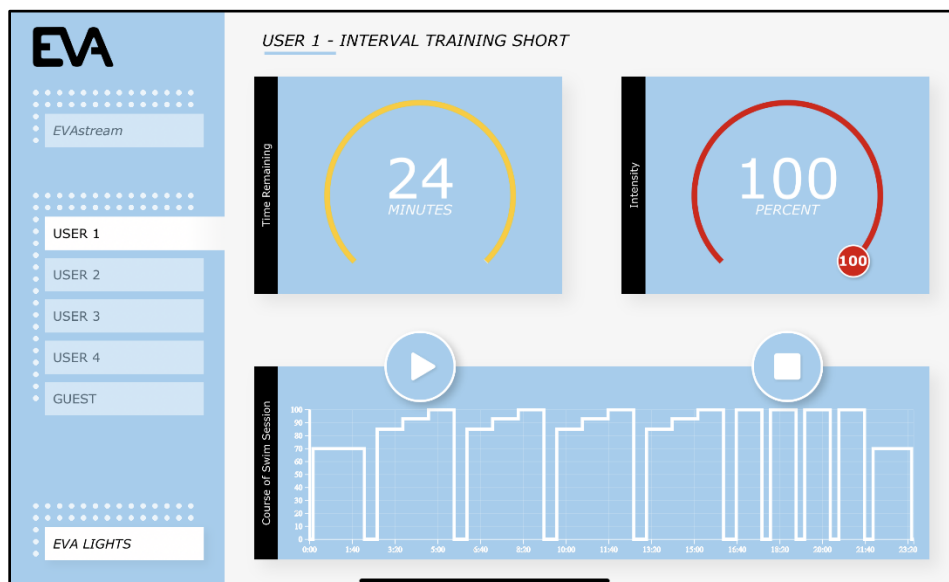
In the webinterface, click on the user of your choice. You now see the following control panel:



You can always follow the swimming training at your own level. Select the desired intensity. The entire workout will now automatically be adjusted to your swim speed.

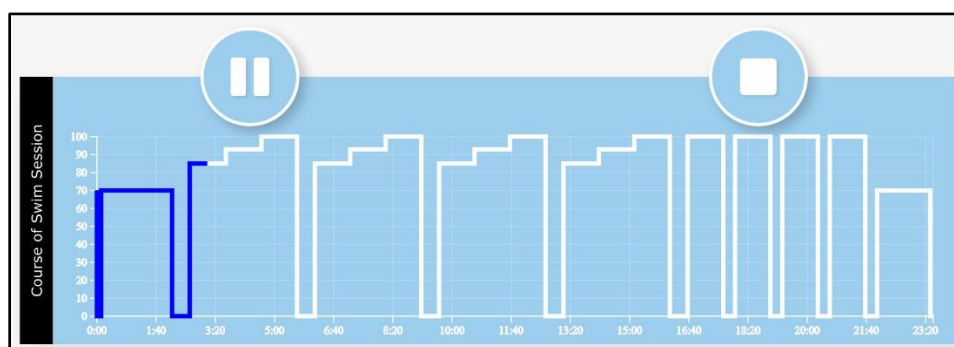
The last used intensity (speed) of the EVAstream is automatically “remembered” in the user settings for each individual user and training. You therefore do not have to remember at what percentage you swim this training type most comfortably.

Select the desired training by clicking on it. You will now see the control panel below:



At **Time Remaining** you can see the duration of the selected training. At **Intensity** you can select the swimming speed by using the slider. **Course of Swim Session** shows how the training is structured.

For example, the screen below shows that this workout starts with a few minutes of warming-up at 70% of full capacity. This is followed by a series of 3 exercises that increase in intensity, each with a short rest break in between. This is followed by a series of 4 shorter exercises at maximum speed and finally a few minutes of cooling down at a low speed.



On the screen you can see in real-time how far you have progressed in the training, which exercise will follow next, and how often it will be repeated. You can always pause and restart your workout. You can also change your swim speed during the current workout with the Intensity slider or with the Piezo3 controller unit in the pool (if applicable).

## Combining EVA Experience Webinterface and Piezo3 controller

The EVA Experience Webinterface can be used in combination with a EVA Piezo3 controller unit in the pool.



You can prepare your swim training on your tablet, and then operate it from inside the pool. Select the training and set the desired intensity of your training in the webinterface. You can then start the workout from the water.

From the pool, press the top Piezo button to start the workout (and pause if desired). The bottom two Piezo buttons are used to decrease (left) or increase (right) the speed. If you press these two buttons at the same time, the child lock will be switched on – if activated – release is only possible via the webinterface.